

Flash Type

Token ID: 28253033

RAM 2Mb

Phone Type

Language Version

BF3

0J230321

Languages

IMEI

GER BUKA

332264-53-361111-7

WAY1

LURKER

Head Flash

BF3 BF4

Connected

Connect

Write Flash

Unlock

IMEI

Extended Menu

Fast Unlock

Read Lang

Write Lang

Backups

Restore

0%

Table of contents

Disclaimer informations	2
1. Getting Started	3
1.1 Installing the software	3
1.2 Installing the driver	4
1.3 Starting the software	4
2. Software Description	5
2.1 Main screen	5
2.2 Setup screen	6
2.3 Extended menu screen	7
2.4 Error screen	8
2.5 IMEI screen	8
3. Basic Functions	9
3.1 Connect	9
3.2 Unlock and Fast Unlock	12
3.3 Backups	13
3.4 Restores	13
3.5 Read/Write Flash	14
3.6 Read/Write Language	14
3.7 Repair IMEI	15
4. Extended Functions	16
4.1 Change Firmware	16
4.2 Repair SOS Call Only	16
4.3 Repair LCD and PA	17
4.4 Activate Language Menu	17
4.5 Fix TEH Checksum	18
5. Support	19
5.1 General informations	19
5.2 Supported versions	20
5.3 Language packs map	23
6. Troubleshooting	25

Disclaimer informations

This software is intended for educational purposes only. This software is intended for personal use ONLY and on your personal phone. This software application in not intended to promote piracy or other illegal activities. Using this software on other people's phones without their approval is strictly prohibited.

Before using this software, check your country laws first. In some countries modifying firmware, simlock or IMEI is strictly prohibited. The software is an educational tool that shows practical examples of the ARM7TDMI instructions in a system based on a free OS - RTOS.

By purchasing and/or using this software, you agree that you are using it in a legal way as permitted by the governing authorities and the relevant laws to which you are currently bound. This software is not made and is not affiliated in any way with Alcatel Company or other subsidiaries of it. The Alcatel and One Touch words are a registered trademark of Alcatel Company. The Alcatel logo is a registered trademark and service mark of Alcatel.

1. Getting Started

1.1 Installing the software

Insert the CD in CD-ROM drive and the auto run feature will automatically start the setup program. If you already have the CD in drive, run the setup.exe and install the software. After installation is done, if you already have the USB Token driver installed you can start and use the software.

1.2 Installing the driver

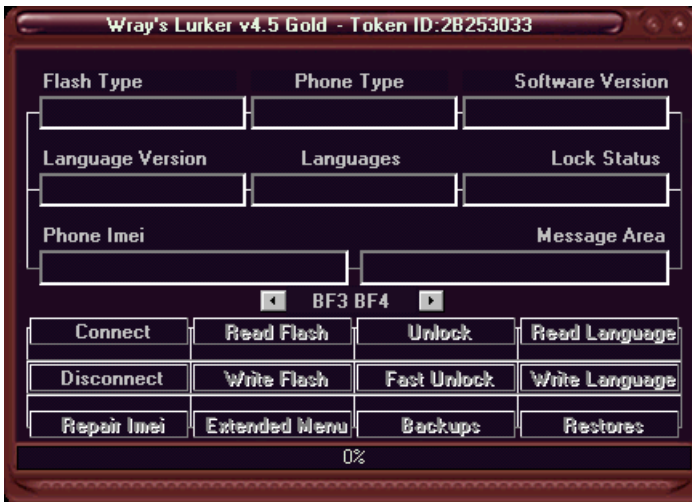
Insert your Token into one of your USB ports. A window will pop-up asking you for the driver. Browse into CD content and choose *Driver* folder. Make sure you have inserted the right token. It should look like in the next picture.



After driver installation, your token is ready to be used, no restart is required.

1.3 Starting the software

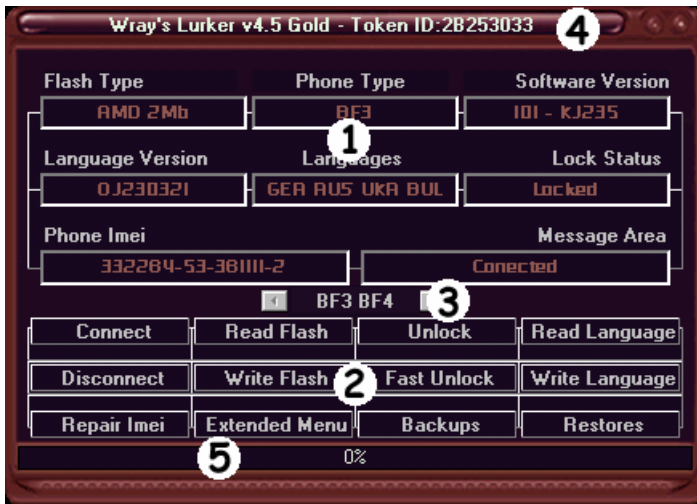
After you successfully installed the software and the driver, you can start the software. At first run, it will generate the needed folders and files. The folders created are *Backups*, *Flashes* and *Languages*. You can use the flashes and language packs directly from the CD or you can copy them to these folders. After you started the software, it should look like in the next picture.



If you see *No Token Found* message displayed in place of Token ID, it means that you didn't plug the token or you didn't install the driver. If you see *Tampered* message, you messed up with the protection and you lost all support.

2. Software Description

2.1 Main screen



- 1 - Display block
- 2 - Buttons block
- 3 - Phone types selector
- 4 - Information bar and Setup button
- 5 - Progress bar

2.2 Setup screen



- 1 - Com port selection
- 2 - Operating system selection
- 3 - Autobackup & logging selection
- 4 - Language selection
- 5 - Sound enable/disable
- 6 - Skin color selection
- 7 - Agree with selections made
- 8 - Discard any modifications made

2.3 Extended menu screen



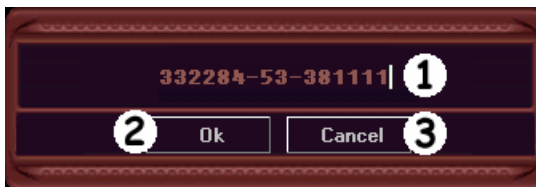
- 1 - Unlocked phones counter
- 2 - LCD type changer
- 3 - PA type changer
- 4 - Language menu enabler
- 5 - Patch firmware option
- 6 - Check and repair TEH checksum
- 7 - Apply selections to phone
- 8 - Discard any modifications made

2.4 Error screen



- 1 - Retry button (first choice)
- 2 - Reconnect and retry (second choice)
- 3 - Abort current operation (ATTENTION)

2.5 IMEI screen



- 1 - IMEI field for change
- 2 - Apply new IMEI to phone
- 3 - Discard IMEI change

3. Basic Functions

3.1 Connect

When the software starts, you should see the Token ID in the upper right corner like this:



If you see **"No Token Found"** like in the next picture, you probably forgot to plug in the token, or to install the driver.



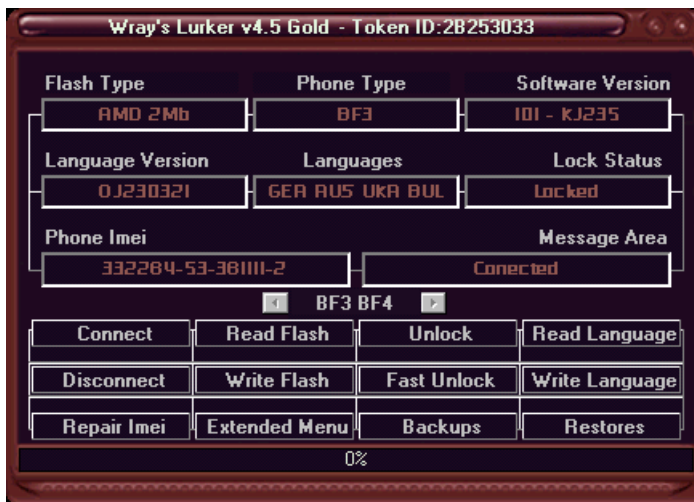
If you see **"Tampered"** that means you tried to crack the software, and you lost the warranty and support. Try to avoid this picture being showed by your software...



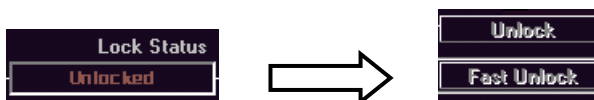
If the software started correctly and you can see your Token ID, you can start to use the software. Plug in the interface or cable into the COM port and click on **"Connect"** button - phone must be OFF. After pushing the button, the progress bar should start to increase, waiting a little at 7% percent and continuing till 100%. If all is ok, you will hear and see the message **"Connected"**.

For XG1, phone must be OFF, click on **"Connect"** button, then push once softly the POWER OFF button on phone. For XG3, phone must be ON, insert cable and be sure "Accessory connected" is shown on the phone's LCD, then click on **"Connect"** button.

This is how the software should look after connecting a BF3(OT311 or OT310) phone:



If you have the phone locked, like in the previous picture, the **"Unlock"** and **"Fast Unlock"** buttons will be enabled(some versions still don't support fast unlock). If the phone is allready unlocked or the phone have corrupted lock area or unlocked with other software, like in next picture, those buttons will be disabled.



If the **"Message Area"** contains the message **"Conected"**, the phone was connected ok and yu can start using enabled functions.

If the "Message Area" contains the message "Communication Error" like in the next picture, the phone was not successfully connected, check again the cable, connector and power source.

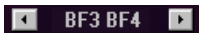




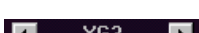
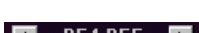
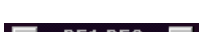


Also be sure the phone connected is not already broken by other interventions on it. For example, if "Phone Imei" display something like the next picture, the THE is already corrupted.



Still, most of phones don't have IMEI in THE zone, so you cannot be sure is good or not only with this method. You have to hit "Backups" button and check the file saved not to be full of 0xFF.

This example is for BF3 phone, but you should select before connecting the phone the right phone model you have.

-  - OT311,OT310,OT511,OT512
-  - OT715
-  - OT525, OT526, OT331, OT332
-  - OT535, OT735, OT735i
-  - OT320
-  - OT531 (Also as bonus M320, M21i, M222i)
-  - OT301, OT302, OT303, OT501, OT701
-  - OTE, OTG, OTC, OTM, OTV, OTV@

3.2 Unlock and Fast Unlock

To unlock your phone, simply click on **"Unlock"** or **"Fast Unlock"** buttons. The difference between them is that normal unlock reads/erases/writes and makes a lock backup in your *Backups* folder, and the fast unlock only writes the patch bytes without erasing or making backup. The first method takes 15-20 seconds, the second one takes 1 second. After unlocking you should hear and see **"Unlocked"** message.

For now, BH4 and XG1 phones don't have fast unlocked method implemented, and XG3 have different unlock system equivalent in time with fast unlock. Also the 124 - CF59D and 106 - KR129 doesn't have fast unlock method implemented.

If you are not satisfied with the unlocked phone, or want to restore the lock or simply something wrong happened, you can restore the lock by pressing **"Restores"** button and selecting the right **.bak** file. Some few models have additional backup files for lock like **.chk** or **.two** or **.3rd**. Be careful and seek these files too if you want to restore your lock OK without killing the phone - all of them have the same name - the IMEI of the phone.

After you unlocked your phone once, or if it is already unlocked, the buttons for unlock will be disabled, so you cannot repeat the operation.

For XG1 unlocking is done by partial chunk writing so be patient till unlock is done, the progress bar is not updated on big resolution.

For XG3 unlocking is done by resetting SML area so the speed is high, like for **"Fast Unlock"**, also you can **"Read Codes"** from phone. To enter the code, you have to keep pressed **"*"** while dialing the code, then it will ask password for Lock or Unlock, depending of lock status.

3.3 Backups

This button is **VERY IMPORTANT**. If for any reason you crashed the software or killed the phone, having TEH backup made with this button is a warranty that you can repair it later. **ATTENTION** - for new BH4 models like 102 - KM183 or 102 - KM283 and up, also from BG3 106 - KR129 and from OT735i 200 - KU20B up, the change of firmware is not supported anymore, so if you kill the phone by mistake **DON'T try to flash it !!!** The backup TEH file is not enough anymore... If you want to be 100% safe, read full flash.

After the button is pressed, the software will backup your TEH zone with the extension **.teh**. It automatically takes the phone IMEI and dumps the file in the **Backups** folder.

3.4 Restores

With this button you can restore different segments of you phone back to their original state if you made backup before. It is mainly used to restore TEH zone, lock zone, perso zone. His function can be integrated in other processes of repair and advanced functions. These will be explained further in **Advanced Functions** topic.

After you click on **"Restores"** you will be prompted to input the file you need to restore. The default set is **.teh** extension, but you can pick other too. Note that some segments are not at fixed addresses and erasing is made segment by segment, this means that to inject some segments into the code the software first will read the remaining bytes, after this will erase and write the combined sectors. Take care if you have errors on reading/erasing/writing you should do your best to finish the operation - making retries or reconnect and retries, you abort on your own risk.

3.5 Read/Write Flash

This is among the easiest functions of the software. Just click on "**Read Flash**" button and the software will ask the path and the name of the file. By default the name will be phone's IMEI or if not available, the phone's software version. The default path is the current path from you executed the software and the default subdirectory is "**Flash**".

To write a flash file, just click on the "**Write Flash**" button and select the needed flash file to write into the phone. Note that if the length is right, the software will write whatever you select into phone. Check the type and version before writing it into the phone to avoid events like writing BE4 flash file into BF3 phone.

Note that file format of XG1 - OT320 phone is not standard binary file, but a custom crypted file, so you cannot write into the phone's other format of files or transport these files for other's software.

3.6 Read/Write Languages

Is used the same procedure like reading/writing flashes. Take care that the files to be for appropriate versions and lengths. For some phone types, the language packs are **latin** - for latin character languages and **complex** - for complex character languages. For changing from one to another, you have to change the firmware first to a latin or complex firmware. Note that BH4 phones, doesn't have this fetaure yet, it will be added in future versions.

XG1 - OT320 phones have language packs emmbed in flash core code, so to change varius packs, you have to flash all the firmware.

3.7 Repair IMEI

With this button you can change the phone's IMEI to whatever you wish. Please note that this is forbidden in some countries so if you use it, consult you state's laws first or use it on your own risk.

This function work for almost all phone types like *OT303*, *OT501*, *OT701*, *OT311*, *OT310*, *OT511*, *OT512*, *BG3*, *BF5* and *BH4*. From new firmware versions of *BH4* like 102 - *KM183* or 102 - *KM283* and up, also from *BG3* 106 - *KR129* and from *OT735i* 200 - *KU20B* this function is not supported anymore.

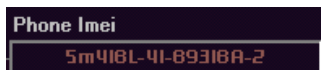
In near future, we will add IMEI change for old types like *BE* phones also.

To change IMEI just click on the corresponding button. A frame will appear like in the next picture.



Simply modify the IMEI number and push **"OK"** button. If you want to discard the change, hit **"Cancel"** button.

If you see on **"Phone Imei"** display something like the next picture, the THE is corrupted and you IMEI change will not affect the functionality of the phone - in much simpler words - the phone will remain dead.



4. Extended Functions

4.1 Change Firmware

With this software you can change firmware to most of the phones supported, whatever you want to upgrade or downgrade your software version. To be able to do these, you have to follow some quick steps:

1. Connect your phone
2. Click "*Backups*"
3. Flash your desired firmware
4. Use "*Patch Firmware*" or "*Restores*" with backup
5. Click on "*Fast Unlock*" or "*Change IMEI*"
6. Disconnect
7. Power ON the phone without SIM card
8. Power OFF the phone

Patch Firmware

Note that some phones require "*Patch Firmware*" operation to mix the TEH data but others can't work with mixed data and needs all backup TEH file to be restored. However, take into account that RF, Charging, etc parameter and ramps are kept in TEH, so changing full TEH from version to version can affect the good functionality of the phone - weak battery performance, weak network signal, etc. Some phones, doesn't have fast unlock feature present, than you MUST change at least a digit in IMEI, due to the fact the patching is applied only on fast unlock or IMEI change.

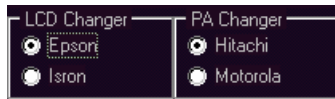
4.2 Repairing SOS Call Only

You have to change firmware of the phone with the method previously described.

XG1 - OT320 has a similar error message when you reached the limit of wrong codes inputted. Click on "*Unlock*" to repair this problem.

4.3 Repair LCD and PA

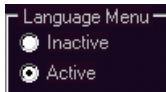
To repair the fault when you cannot see anything shown on display due to firmware change or other reasons, click "**Extended Menu**" with the phone connected. Change the LCD type from one to another and hit "**OK**".



When you have poor signal performanicies after firmware change or other reason, you can change the PA - Signal Power Amplifier type and test for better results.

4.4 Activate Language Menu

Some phones come with the language menu disabled, to repair this, you have to click on "**Extended Menu**", select "**Active**" and click on "**OK**" button.



If you want for various reasons to disable it back, just select "**Inactive**" and click on "**OK**".

Some XG1 - OT320 phones come with only a selectable language, too, sometimes. To re-enable all languages in menu, just click "**Unlock**" and this should do the job.

4.5 Repair TEH Checksum

Sometimes phones have wrong checksum in TEH. This is due to wrong patch, wrong firmware change or other reasons. You can tell an Alcatel phone have bad checksum in TEH when the phone's battery indicator is blinking empty.

You can fix this by clicking on "*Extended Menu*" button, selecting "*Check Tech*" and clicking on "*OK*".



For XG3 phones, the "*Permanently blocked*" error can be corrected very easy, only by pressing "*Unlock*". Also "*Contact provider*" can be repaired in the same manner, with the essential condition that the flash to be patched for SML backup in flash - technique known as FLASHPROTECT. If you cannot repair this error only by pressing "*Unlock*" then you need a specialised Mitsubishi tool like *Wray's Evolver* to be able to Read/Write eeprom and flash.

5. Support

5.1 General Informations

This software comes with a warranty and support period of 1 year. On all this period of time, the updates to this software are free.

- If you encounter a new version or an unsupported version, please read full flash and send the file to official mail.
- If you find a bug in the software please make a screen capture and send it to official mail.
- The updates are announced and ready to be downloaded on the official site.
- The list of official reseller is shown on official site.
- The list of old and new versions supported is updated weekly and you can find it on official site.

For other informations search in **Troubleshooting and FAQ** section.

Official site

www.wraymogg.ro

Official mail

ray@wraymogg.ro

5.2 Supported versions

BH4	
OT535	OT735
100 - KM153	101 - KM264
100 - KM159	101 - KM265
101 - KM164	101 - KM266
101 - KM165	102 - KM278
102 - KM178	102 - KM283
101 - KM183	102 - KM285
	200 - KU20B

BG3	
OT331	OT332
104 - KP140	106 - KR126
104 - KP145	106 - KR127
104 - KP146	106 - KR129
104 - KN14A	
104 - KN14B	
101 - KS124	

BG3	
OT525	OT526
101 - KL169	110 - KN125
101 - KL16A	110 - KN127
101 - KL16B	110 - KN129
101 - KL16C	120 - KN12A
110 - KL184	120 - KN12C
110 - KL188	
120 - KL18B	
120 - KL18D	

XG	
OT320	OT531
332 - GA313	64A - 91230
358 - LO814	64A - B9280
408 - AA320	64A - Q1500
401 - AA012	64A - H1854
501 - AA414	64D - B9250
502 - AD625	64U - D1410
503 - AA718	
503 - AB028	
505 - AC103	

BF5
OT715
103 - KK188
103 - KK189
104 - KK197
104 - KK198

BF4	
OT511	OT512
023 - KI119	10B - KI21D
104 - KI11G	10C - KI225
10B - KI11P	10D - KI227
10B - KI11Q	10D - KI229
10B - KI11R	10E - KI22A
10B - KI11S	10E - KI22B
10C - KI123	10P - KI525
10C - KI124	10Q - KI52B
10C - KI125	10Q - KI52D
10D - KI127	10R - KI52H
10D - KI129	10R - KI52K
10E - KI12A	10R - KI52L
10E - KI12B	10R - KI52P
10E - KI12C	10R - KI52Q

BF3	
OT311	OT310
101 - KJ132	101 - KH121
101 - KJ133	101 - KJ235
102 - KJ143	101 - KJ236
102 - KJ1M4	102 - KJ245
102 - KJ1M5	102 - KJ246
103 - KJ154	103 - KJ253
103 - KJ155	103 - KJ254
104 - KJ158	103 - KJ255
104 - KJ159	103 - KJ256
104 - KJ15A	

BE4		
OT301	OT302	OT303
134 - KG155	135 - KH165	137 - KG166
134 - KH162	136 - KG164	138 - KG174
135 - KG162	136 - KH173	138 - KG176
135 - KH164		139 - KG179

BE5	
OT501	OT701
120 - CE142	122 - CF150
121 - CE14B	124 - CF598
122 - CE14H	124 - CF59D
121 - CE55A	
121 - CE55B	
123 - CE566	

BE3	
OTView	OTView@
166 - CC184	170 - CD1E6
167 - CC185	171 - CD1E8
16A - CC196	
16B - CC19B	

BE1	
OTEasy	OTClub
16A - CB397	151 - CB173
16A - CB39A	161 - CB176
16B - CB39B	162 - CB178
16C - CB39A	163 - CB17A
16C - CB39D	166 - CB186
16D - CB39F	167 - CB188
16F - CB39H	16A - CB19A
16F - CB79H	16A - CB19B
	16C - CB19D
	16D - CB19F
	16F - CB19H
	16F - CB59H

5.3 Language packs map

BF3/BF4 Latin Languages				
01	German	French	Italian	Spanish
02	German	French	Portuguese	Spanish
03	German	Italian	Dutch	French
04	Basque	French	Catalan	Spanish
05	German	French	Turkish	Dutch
06	German	Danish	Swedish	Norwegian
07	German	French	Greek	Turkish
08	German	Polish	Czech	Slovak
09	Finnish	Estonian	Lithuanian	Latvian
0A	Indonesian Bahasa		Malaisian Bahasa	
0B	German	French	Italian	Romanian
0C	German	French	Hungarian	Finnish
0D	German	Croatian	Slovenian	French
0E	German	French	Polish	
0F	German	French	Latin Serbian	
0G	German	French	Albanian	
0H	German	Hungarian	Slovak	Czech

BF3/BF4 Complex Languages				
01	Simple Chinese		Malaisian Bahasa	
02	French	Arabic	Persian	
03	German	Russian	Ukranian	Bulgarian
04	Greek	Serbian	Bulgarian	Macedonian
05	Malaisian Bahasa		Thai	
06	Russian		Romanian	
07	Russian	Latvian	Estonian	Lituanien
08	Chinese	Arabic	Complex English	
0A	Classic Chinese		Thai	
0C	Classic Chinese			

BF4 Mixed Languages

BF4 Mixed Languages				
01	German	Italian	Spanish	French
02	German	Portuguese	Spanish	French
03	German	Spanish	Dutch	French
04	Basque	Catalan	Spanish	Galician
05	German	Turkish	Dutch	French
06	German	Danish	Swedish	Norwegian
07	German	Greek	Turkish	French
08	German	Polish	Czech	Slovak
09	Finnish	Estonian	Lithuanian	Latvia
0B	German	Italian	Rumanian	French
0C	German	Hungarian	French	
0D	German	Croatian	Slovenia	French
0E	German	French	Polish	
0F	Greek	Italian	French	Albania
0G	German	Hungarian	Czech	Slovak
11	Simplified Chinese		Malaysian Bahasa	
12	Arabic	French	Persian	
13	German	Bulgarian	Russian	Ukrainian
14	German	French	Macedonian	
15	Bahasa Malay		Arabic	Chinese
16	Russian		Romanian	
17	Estonian	Latvian	Lithuanian	Russian
19	Traditional Chinese		Thai	
1A	Vietnamese	French	Simplified Chinese	
1C	Traditional Chinese			
21	English	Arabic	Simplified Chinese	
22	Complex English		Traditional Chinese	

6. Troubleshooting

!! ATTENTION !!

- Do not run anymore versions under v4.3 on Lurker or Mixed dongles - it will give "Stream Read Error"

- Do not run anymore versions under v4.0 on Lurker or Mixed dongles - it will give "No Dongle Found"

- Do not start Lurker versions under v4.2 on Evolver dongles - it will give "Communication Error" on 95%

Q: My software cannot connect with the phone, I get only "Communication error" message, why ?

A: *Check your cable or power supply, remove the battery from phone and put it back and try again. Take care that operating system to match the selection you made in Setup screen.*

Q: When I try to connect a BG3 phone I get "Communication error" and the flash type is "Hyundai 4Mb", why ?

A: *This problem appears when you do not power the interface externally or the MAX232 used in interface gives too little voltage.*

Q: Why I cannot connect to BE types of phones ?

A: *Don't forget to power the interface externally, and don't forget that BE series uses only 5V communication, not like BF models with 3,6V, so you can raise a little the power level. Also be sure you power up the phone not with battery but with interface.*

Q: The software displays "No Token Found" even I plug in the USB Token, why ?

A: *This seems to be Windows OS problem, restart and if is not corrected, enter in Safe Mode, remove the token driver, go manually and find it in Windows folder and erase it, after this reboot and reinstall it again from CD*

Q: The software works too slow, on my computer to flash a phone, takes 30 min, why ?

A: *Buy a new computer, this software is intended to work at least on a PIII with decent resources.*

Q: When I try to connect an XG3 phone, it stops at 95%

A: *The cable is not good, you didn't applied sufficient power to the cable or you killed the dongle starting a too old version of Lurker on too recent dongle. The same problem for mixed dongles Lurker + Evolver. See your reseller for dongle change.*

Q: For how long I have support for this software ?

A: *You have support for 1 year, but this support system is very flexible and always in customers's advantage.*

Q: If a new software version comes up what I am supposed to do ?

A: *Read the full flash and send it fast to official mail, it will be updated in 48 hours.*

Q: If a new type of phone come up on market I'll have the upgrade free ?

A: *Mainly, yes, for example if I sold software for BG3 and the new phone is OT331 which is still BG3 the upgrade is free, if for example appears XG5 the upgrade can be free or it cannot be.*

Q: This software works under WindowsXP & Windows2000 ?

A: *Yes, but some BF5 phones have problems on connecting on WindowsXP system.*

Q: What the package should contain when I buy it ?

A: *The default items must be USB Dongle and CD. The rest of items depend exclusive of reseller and the amount of money you payed.*